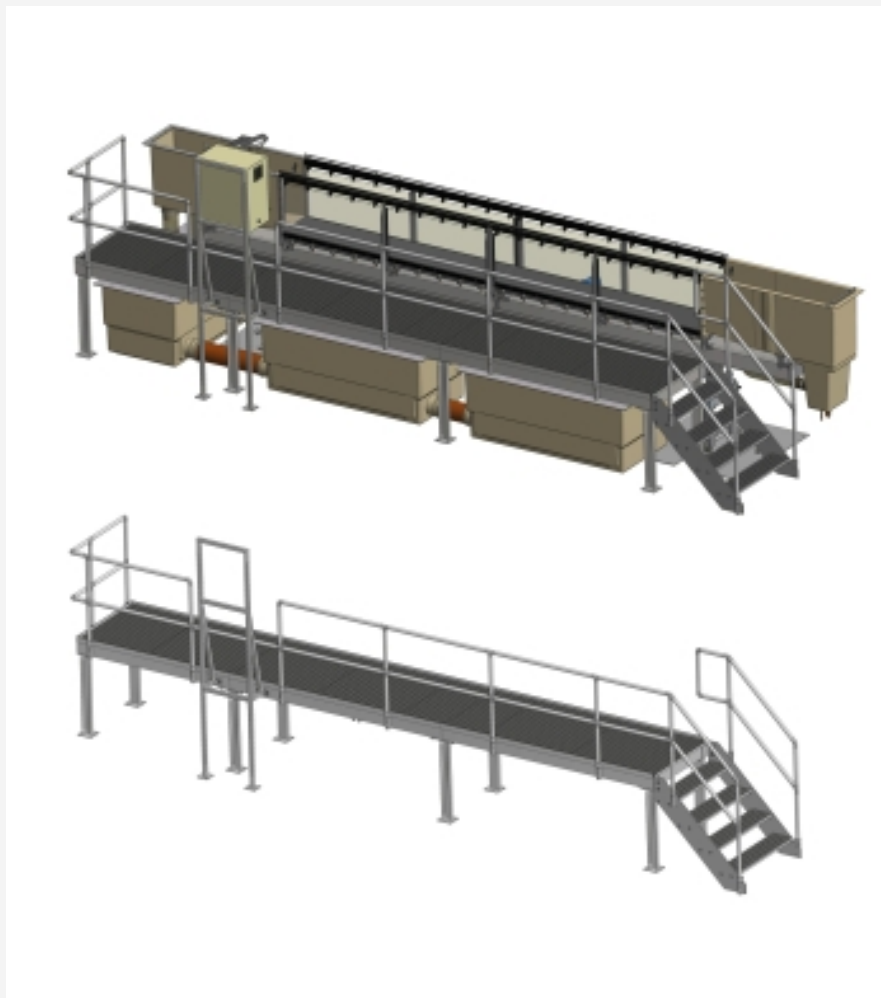


HM 163.14

Gallery



Top: experimental flume with gallery, bottom: gallery

Specification

- [1] gallery that can be walked on as accessory for the experimental flume HM 163 with an experimental section of 5m length
- [2] catwalk with stairs and rail
- [3] accessible surfaces with non-slip floor with grating
- [4] frame for the switchbox of the experimental flume
- [5] can be extended with extension elements HM 163.15

Technical data

Height of the catwalk above the floor

■ 1050mm

Height of the rail at the catwalk

■ approx. 1000mm

LxWxH: 8000x1300x2600mm

Weight: approx. 900kg

Scope of delivery

- 1 gallery
- 1 frame

Description

- gallery that can be walked on as accessory for the experimental flume HM 163 with an experimental section of 5m length

The gallery for the experimental flume HM 163 makes it easy to put accessories into the experimental section or take them out. The user can easily access any point of the experimental section.

The gallery consists of a catwalk with rail and stairs. The accessible surfaces have a non-slip floor with grating. A frame is used to mount the switchbox of the experimental flume.

HM 163.14 is laid out for the experimental flume with an experimental section of 5m length. The gallery can be extended stepwise by 2,5m by adding extension elements HM 163.15.

HM 163.14 is mounted during the setup of the experimental flume. It is not possible to install the gallery at a later date.

HM 163.14

Gallery

Required accessories

HM 163 Experimental flume 409x500mm

Optional accessories

HM 163.15 Extension element of the gallery