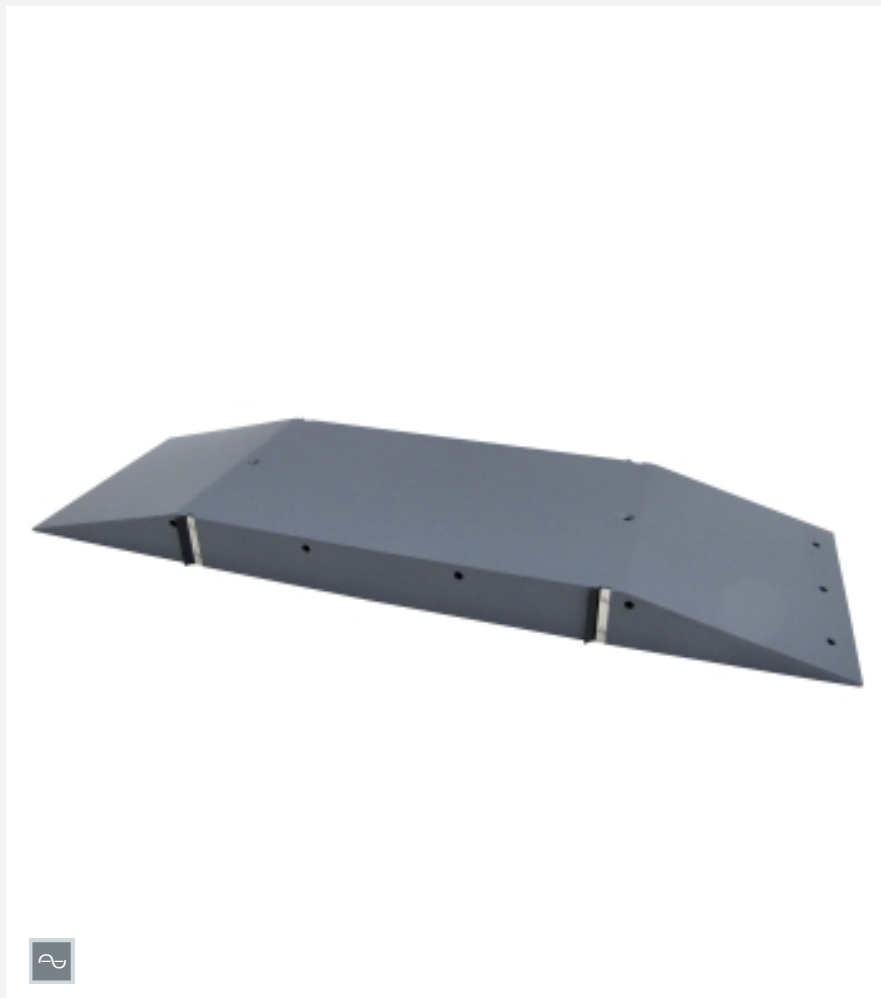


# HM 163.44

## Sill



### Learning objectives/experiments

- behaviour of open channel flow at a reduction of flow cross-section

### Specification

- [1] sill for experimental flume HM 163
- [2] sill with sealing lips
- [3] removable assembly aids

### Technical data

Inclination of inlet/outlet element: approx. 15°  
Material: PVC

LxWxH: 1270x404x70mm  
Weight: approx. 17kg

### Scope of delivery

- 1 sill
- 1 set of accessories
- 1 manual

### Description

#### ■ reduction of the flow cross-section in a flume

Sills are used to reduce the flume slope to decrease erosion processes at the flume bottom. Usually, they are designed as a step downstream. Fish ladders are often made of small sills. Bridge pier foundations may have the same effects as a sill.

Sills cause a reduction of the flow cross-section.

The behaviour of open channel flow at a reduction of the flow cross-section can be observed using the sill HM 163.44.

# HM 163.44

## Sill

Required accessories

HM 163                    Experimental flume 409x500mm